

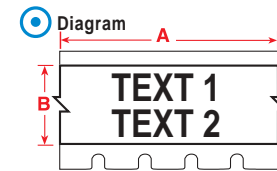
MRO/FACILITY/SAFETY

Indoor/Outdoor Grade Facility & Safety Labels

This indoor/5-yr outdoor vinyl is very pliable and conforms well to smooth or rough surfaces such as pipes, walls, doors, panels, shelving, bins and equipment. Aggressive permanent adhesive. Excellent resistance to oils, detergents, dirt, grime and many solvents.

► **B-580 Indoor/Outdoor Vinyl** material, permanent adhesive, good for rough surfaces. Temp Range: -40°F to 248°F (-40°C to 120°C).

Diagram	Part Number	Labels per Cartridge	Dimensions - inches A B	Dimensions - mm A B	Color
⊙	XC-500-580-WT-BK	1 roll (cont.)	30 ft. 0.500	9.14 m 12.70	BK on WT
⊙	XC-1000-580-WT-BK	1 roll (cont.)	30 ft. 1.000	9.14 m 25.40	BK on WT
⊙	XC-1500-580-WT-BK	1 roll (cont.)	30 ft. 1.500	9.14 m 38.10	BK on WT
⊙	XC-500-580-OR-BK	1 roll (cont.)	30 ft. 0.500	9.14 m 12.70	BK on OR
⊙	XC-1000-580-OR-BK	1 roll (cont.)	30 ft. 1.000	9.14 m 25.40	BK on OR
⊙	XC-1500-580-OR-BK	1 roll (cont.)	30 ft. 1.500	9.14 m 38.10	BK on OR
⊙	XC-500-580-YL-BK	1 roll (cont.)	30 ft. 0.500	9.14 m 12.70	BK on YL
⊙	XC-1000-580-YL-BK	1 roll (cont.)	30 ft. 1.000	9.14 m 25.40	BK on YL
⊙	XC-1500-580-YL-BK	1 roll (cont.)	30 ft. 1.500	9.14 m 38.10	BK on YL
⊙	XC-500-580-CL-BK	1 roll (cont.)	30 ft. 0.500	9.14 m 12.70	BK on CL
⊙	XC-1000-580-CL-BK	1 roll (cont.)	30 ft. 1.000	9.14 m 25.40	BK on CL
⊙	XC-1500-580-CL-BK	1 roll (cont.)	30 ft. 1.500	9.14 m 38.10	BK on CL
⊙	XC-500-580-RD-WT	1 roll (cont.)	30 ft. 0.500	9.14 m 12.70	WT on RD
⊙	XC-1000-580-RD-WT	1 roll (cont.)	30 ft. 1.000	9.14 m 25.40	WT on RD
⊙	XC-1500-580-RD-WT	1 roll (cont.)	30 ft. 1.500	9.14 m 38.10	WT on RD
⊙	XC-500-580-GN-WT	1 roll (cont.)	30 ft. 0.500	9.14 m 12.70	WT on GN
⊙	XC-1000-580-GN-WT	1 roll (cont.)	30 ft. 1.000	9.14 m 25.40	WT on GN
⊙	XC-1500-580-GN-WT	1 roll (cont.)	30 ft. 1.500	9.14 m 38.10	WT on GN
⊙	XC-500-580-BL-WT	1 roll (cont.)	30 ft. 0.500	9.14 m 12.70	WT on BL
⊙	XC-1000-580-BL-WT	1 roll (cont.)	30 ft. 1.000	9.14 m 25.40	WT on BL
⊙	XC-1500-580-BL-WT	1 roll (cont.)	30 ft. 1.500	9.14 m 38.10	WT on BL
⊙	XC-500-580-WT-RD	1 roll (cont.)	30 ft. 0.500	9.14 m 12.70	RD on WT
⊙	XC-1000-580-WT-RD	1 roll (cont.)	30 ft. 1.000	9.14 m 25.40	RD on WT
⊙	XC-1500-580-WT-RD	1 roll (cont.)	30 ft. 1.500	9.14 m 38.10	RD on WT



MRO/FACILITY/SAFETY

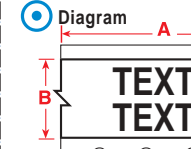
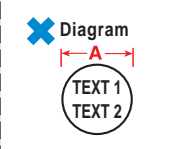
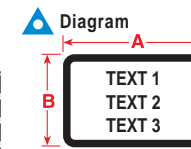
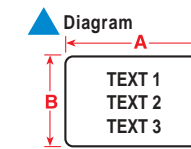
Bins & Storage ID, General Industrial ID

Choose from several aggressive label materials in a variety of sizes.

- **B-422 Gloss Polyester** material, permanent adhesive. For smooth surfaces. Temp Range: -40°F to 212°F (-40°C to 100°C). UL recognized.
- **B-428 Metallized Polyester** material, permanent adhesive, silver finish. Temp Range: -40°F to 176°F (-40°C to 80°C). UL recognized.
- **B-499 Nylon Cloth** material, permanent adhesive. Pliable for rough or smooth surfaces. Temp Range: -94°F to 194°F (-70°C to 90°C). UL recognized.
- **B-483 Ultra Aggressive Polyester**, permanent adhesive for powder-coated/textured surfaces. Temp Range: -40°F to 248°F (-40°C to 120°C). UL recognized.
- **B-580 Indoor/Outdoor Vinyl** material, permanent adhesive, good for rough surfaces, wide range of colors. Temp Range: -40°F to 248°F (-40°C to 120°C).

Diagram	Part Number	Labels per Cartridge	Dimensions - inches A B	Dimensions - mm A B	Material Notes	Color
▲	X-7-422	350	0.500 0.500	12.70 12.70	Gloss Polyester	BK on WT
▲	X-11-499	350	0.750 0.500	19.05 12.70	Permanent Nylon Cloth	BK on WT
▲	X-17-483	500	1.000 0.500	25.40 12.70	Ultra Polyester for Textured surfaces	BK on WT
▲	X-84-499	500	0.900 0.500	22.86 12.70	Permanent Nylon Cloth	BK on WT
▲	X-17-428-SV-BK	500	1.000 0.500	25.40 12.70	Metallized Polyester	BK on SV
▲	X-19-422	250	1.000 1.000	25.40 25.40	Gloss Polyester	BK on WT
▲	X-24-428-SVBB-BK	500	1.130 0.500	28.70 12.70	Metallized Polyester (Black Border)	BK on SV
▲	X-29-428-SV-BK	500	1.500 0.500	38.10 12.70	Metallized Polyester	BK on SV
▲	X-30-422	250	1.500 0.750	38.10 19.05	Gloss Polyester	BK on WT
▲	X-61-483	100	2.000 0.500	50.80 12.70	Ultra Polyester for Textured surfaces	BK on WT
▲	X-20-483	100	2.000 1.000	50.80 25.40	Ultra Polyester for Textured surfaces	BK on WT
▲	X-20-428-SV-BK	100	2.000 1.000	50.80 25.40	Metallized Polyester	BK on SV
▲	X-82-499	350	0.375 dia	9.53 dia	Permanent Nylon Cloth (Round Label)	BK on WT
▲	X-83-499	350	0.500 dia	12.70 dia	Permanent Nylon Cloth (Round Label)	BK on WT
⊙	XC-1000-483	1 roll (cont.)	30 ft. 1.000	9.14 m 25.40	Ultra Polyester for Textured surfaces*	BK on YL
⊙	XC-500-580-YL-BK	1 roll (cont.)	30 ft. 0.500	9.14 m 12.70	Indoor/Outdoor Vinyl (colored supplies)*	BK on YL
⊙	XC-1000-580-YL-BK	1 roll (cont.)	30 ft. 1.000	9.14 m 25.40	Indoor/Outdoor Vinyl (colored supplies)*	BK on YL
⊙	XC-1500-580-YL-BK	1 roll (cont.)	30 ft. 1.500	9.14 m 38.10	Indoor/Outdoor Vinyl (colored supplies)*	BK on YL

*Also available in Red, Orange, Green, Blue, White and Clear—refer to "Facility & Safety Labels" on facing page.



Introducing the only Labeling Tool to deserve the name... **IDXPERT™** HANDHELD LABELER



Keyboard Layout

ABC Layout

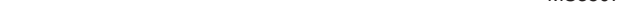
Two printer keyboard layouts. Identical functionality and supplies.

Catalog #	Description
XPRT-ABC	IDXPERT Printer - ABC Layout*
XPRT-KEY	IDXPERT Printer - KEYBOARD Layout*
XPRT-AC	AC Adapter (for ABC or KEY printers)
PCCABLE-1	PC Cable for Upgrades Only (for ABC or KEY)
PKK-4	Cleaning Kit
XPRT-HC-ABC	Spare Hard Case for ABC Layout Printer
XPRT-HC-KEY	Spare Hard Case for KEYBOARD Layout Printer

* Printer ships with: Hard carry case, 1.5" x 30' Continuous Tape, PC Cable for upgrades only, Product CD with Tutorials

More Options

- **MORE TYPES OF LABELS**
Self-Lams, Sleeves and 90+ label styles to choose from including Continuous Tapes.
- **MORE WIDTH**
Materials up to 1.5" wide; Prints characters up to 1.25".
- **MORE SYMBOLS**
82 symbols plus bar codes.



More Brains

- **DROP, LOCK & PRINT**
Quick loading cartridge makes switching jobs really fast.
- **"SMART CARTRIDGE" SAVES TIME**
Auto-senses label type and size. NO extra keys to press.
- **INTUITIVE USER INTERFACE**
Easily access even complex functions in fewer steps!
- **MEMORY**
Store frequently used set-ups.
- **DISPLAY**
Larger, more informative display.
- **TRULY HANDY**
Ergonomic design really fits your hand!

More Brawn

- **PRINTS FAST & CLEAN**
300 dpi thermal transfer printing stays crisp and bright.
- **TOUGH**
Rugged, drop-tested construction.

Less Waste

- **SAVES YOU MONEY**
Edge-to-edge printing and Die Cut labels reduce your materials expenses.

Use only the amount you need.



BRADY®

IDXPERT™ HANDHELD LABELER



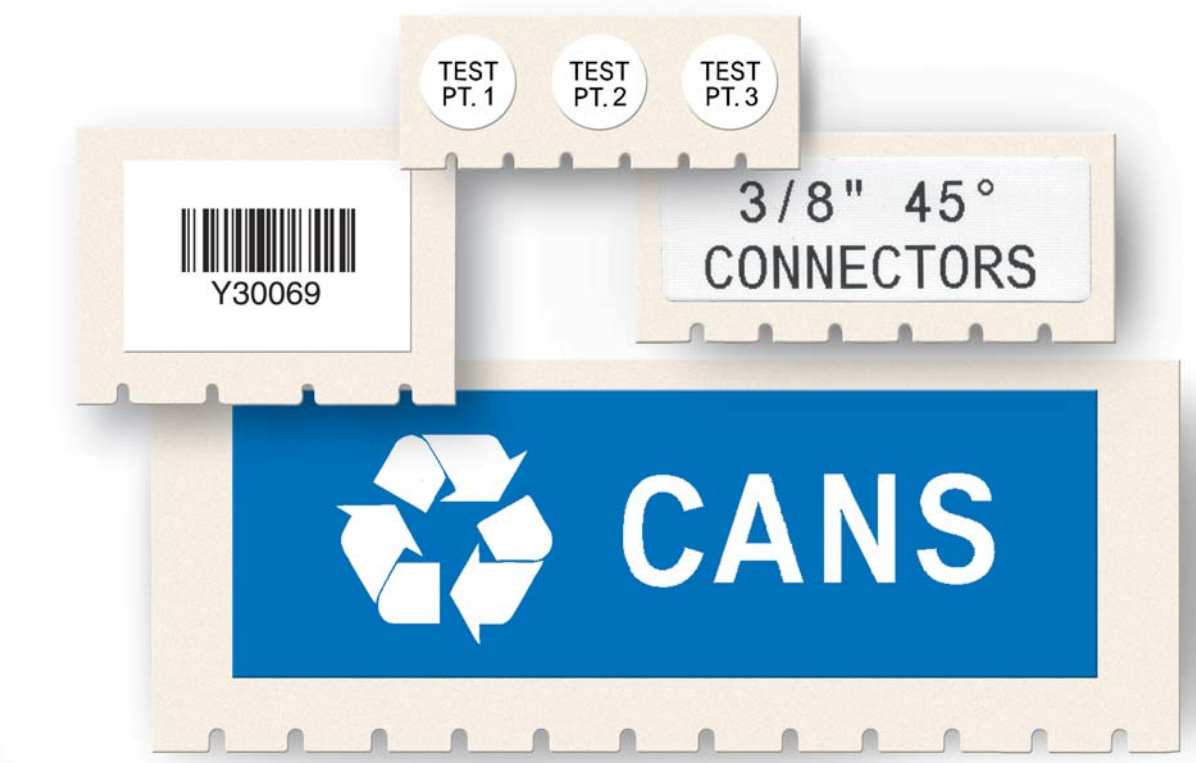
Brady's outstanding new portable printer.
More Options, More Brains, More Brawn...
Less Waste!

BRADY®

ISO 9001 Certified



MS380098



ELECTRICAL I.D.
Wire & Cable Markers – Adhesive Wrap Around

Durable vinyl cloth wrap-around wire & cable marker. Stays in place, but can be removed cleanly and reapplied if necessary. Printer automatically "multiple repeats" your text to create a wrap-around marker with 360° visibility of legend.

► **B-498 Vinyl Cloth** material. Temp Range: -40°F to 175°F (-40°C to 70°C).

Wire Gauge*	Max. Wire Diameter	Diagram	Part Number	Labels per Cartridge	Dimensions – inches A B	Dimensions – mm A B	Color
22-16 Gauge	0.110" max dia (2.80 mm)	▲	X-7-498	350	0.500 0.500	12.70 12.70	BK on WT
16-10 Gauge	0.160" max dia (4.00 mm)	★	X-11-498	350	0.500 0.750	12.70 19.05	BK on WT
12-10 Gauge	0.210" max dia (5.00 mm)	★	X-19-498	250	1.000 1.000	25.40 25.40	BK on WT
12-10 Gauge	0.210" max dia (5.00 mm)	★	X-18-498	250	0.750 1.000	19.05 25.40	BK on WT
10-4 Gauge	0.270" max dia (7.00 mm)	★	X-103-498	250	1.000 1.250	25.40 31.75	BK on WT

*Approx based on AWG for THHN wire



ELECTRICAL I.D.
Wire & Cable Markers – Self Laminating

This wire & cable marker's protected printing offers superior chemical and abrasion resistance. Marker features a non-printed clear area which wraps around and overlaminates the printed text. Printer automatically "multiple repeats" your text in the white print area.

► **B-427 Vinyl Self-Laminating** material, resistant to water, oil, solvents and abrasion. Temp range: -94°F to 158°F (-70°C to 70°C). UL recognized.

Wire Gauge*	Max. Wire Diameter	Diagram	Part Number	Labels per Cartridge	Dimensions – inches A B C	Dimensions – mm A B C	Color
16-10 Gauge	0.160" max dia (4.00 mm)	▲	XSL-11-427	500	0.500 0.750 0.375	19.05 19.05 9.53	BK on WT
16-10 Gauge	0.160" max dia (4.00 mm)	▲	XSL-96-427	250	1.000 0.750 0.375	25.40 19.05 9.53	BK on WT
12-10 Gauge	0.210" max dia (5.00 mm)	▲	XSL-17-427	500	0.500 1.000 0.375	12.70 25.40 9.53	BK on WT
12-10 Gauge	0.210" max dia (5.00 mm)	▲	XSL-18-427	250	0.750 1.000 0.375	19.05 25.40 9.53	BK on WT
12-10 Gauge	0.210" max dia (5.00 mm)	▲	XSL-19-427	250	1.000 1.000 0.375	25.40 25.40 9.53	BK on WT
10-4 Gauge	0.270" max dia (7.00 mm)	▲	XSL-102-427	250	0.500 1.250 0.375	12.70 31.75 9.53	BK on WT
10-4 Gauge	0.270" max dia (7.00 mm)	▲	XSL-103-427	250	1.000 1.250 0.500	25.40 31.75 12.70	BK on WT
10-4 Gauge	0.270" max dia (7.00 mm)	▲	XSL-115-427	250	1.500 1.250 0.500	38.10 31.75 12.70	BK on WT
10-4 Gauge	0.320" max dia (8.00 mm)	▲	XSL-29-427	500	0.500 1.500 0.500	12.70 38.10 12.70	BK on WT
10-4 Gauge	0.320" max dia (8.00 mm)	▲	XSL-30-427	250	0.750 1.500 0.500	19.05 38.10 12.70	BK on WT
10-4 Gauge	0.320" max dia (8.00 mm)	▲	XSL-31-427	250	1.000 1.500 0.500	25.40 38.10 12.70	BK on WT
10-4 Gauge	0.320" max dia (8.00 mm)	▲	XSL-31-427-YL-BK	250	1.000 1.500 0.500	25.40 38.10 12.70	BK on YL
10-4 Gauge	0.320" max dia (8.00 mm)	▲	XSL-32-427	250	1.500 1.500 0.500	38.10 38.10 12.70	BK on WT
3 Gauge-2/0	0.530" max dia (14.00 mm)	▲	XSL-21-427	100	1.000 2.500 0.750	25.40 63.50 19.05	BK on WT
3 Gauge-2/0	0.530" max dia (14.00 mm)	▲	XSL-21-427-YL-BK	100	1.000 2.500 0.750	25.40 63.50 19.05	BK on YL
3 Gauge-2/0	0.530" max dia (14.00 mm)	▲	XSL-21-427-YL-BK	100	1.000 2.500 0.750	25.40 63.50 19.05	BK on YL
30-400 kcmil	0.850" max dia (22.00 mm)	▲	XSL-23-427	100	1.000 4.000 1.000	25.40 101.60 25.40	BK on WT
30-400 kcmil	0.850" max dia (22.00 mm)	▲	XSL-23-427-YL-BK	100	1.000 4.000 1.000	25.40 101.60 25.40	BK on YL
30-400 kcmil	0.850" max dia (22.00 mm)	▲	XSL-33-427	100	1.500 4.000 1.000	38.10 101.60 25.40	BK on WT
500-900 kcmil	1.300" max dia (33.00 mm)	▲	XSL-34-427	50	1.500 6.000 1.500	38.10 152.40 38.10	BK on WT

*Approx based on AWG for THHN wire

ELECTRICAL I.D.
Wire & Cable Markers – Permasleeve™ Sleeves

These full circle heat-shrink sleeves are the ultimate in marker durability, permanence and aesthetic appearance. Fast-shrink rate saves time & cost during installation. Available as individual 1-inch long markers or cut-to-length continuous supply.

► **B-342 Heat Shrink Polyolefin** material, 3-to-1 shrink ratio, self-extinguishing, meets material & physical properties requirements of MIL-DTL-23053/5C class 1, MIL-M-81531, MIL-STD-202F, method 215 and UL 224. Temp Range: -67°F to 275°F (-55°C to 135°C).

Wire Gauge*	Wire Diameter Range	Diagram	Part Number	Labels per Cartridge	Dimensions – inches A B	Dimensions – mm A B	Color
1.015" MARKER LENGTH							
22-16 Gauge	0.046 - 0.110 dia (1.20 - 2.80 mm)	■	XPS-125-1	100	1.015 0.235	25.78 5.96	BK on WT
18-12 Gauge	0.062 - 0.150 dia (1.60 - 3.80 mm)	■	XPS-187-1	100	1.015 0.335	25.78 8.50	BK on WT
16-10 Gauge	0.094 - 0.215 dia (2.40 - 5.50 mm)	■	XPS-250-1	100	1.015 0.439	25.78 11.15	BK on WT
12-6 Gauge	0.125 - 0.320 dia (3.20 - 8.10 mm)	■	XPS-375-1	100	1.015 0.645	25.78 16.38	BK on WT
CONTINUOUS (CUT TO LENGTH)							
22-16 Gauge	0.046 - 0.110 dia (1.20 - 2.80 mm)	■	XPS-125-CONT	1 roll (cont.)	12 ft. 0.235	3.65 m 5.96	BK on WT
22-16 Gauge	0.046 - 0.110 dia (1.20 - 2.80 mm)	■	XPS-125-CONT-YL-BK	1 roll (cont.)	12 ft. 0.235	3.65 m 5.96	BK on YL
18-12 Gauge	0.062 - 0.150 dia (1.60 - 3.80 mm)	■	XPS-187-CONT	1 roll (cont.)	12 ft. 0.335	3.65 m 8.50	BK on WT
18-12 Gauge	0.062 - 0.150 dia (1.60 - 3.80 mm)	■	XPS-187-CONT-YL-BK	1 roll (cont.)	12 ft. 0.335	3.65 m 8.50	BK on YL
16-10 Gauge	0.094 - 0.215 dia (2.40 - 5.50 mm)	■	XPS-250-CONT	1 roll (cont.)	12 ft. 0.439	3.65 m 11.15	BK on WT
16-10 Gauge	0.094 - 0.215 dia (2.40 - 5.50 mm)	■	XPS-250-CONT-YL-BK	1 roll (cont.)	12 ft. 0.439	3.65 m 11.15	BK on YL
12-6 Gauge	0.125 - 0.320 dia (3.20 - 8.10 mm)	■	XPS-375-CONT	1 roll (cont.)	12 ft. 0.645	3.65 m 16.38	BK on WT

*Approx based on NEC for THHN wire.



ELECTRICAL I.D.
Terminal Block Markers

These specially-designed narrow-width markers automatically set to fixed spacing and separation between legends and rotate to top-down orientation for perfect alignment on terminal blocks. Printer can auto-serialize to save additional time.

► **B-498 Vinyl Cloth** material. Temp Range: -40°F to 175°F (-40°C to 70°C).

Width of Strip	Diagram	Part Number	Labels per Cartridge	Dimensions – inches A B	Dimensions – mm A B	Color
0.240" wide	●	XC-240-498	1 roll (cont.)	0.240 26 ft.	6.10 7.92 m	BK on WT
0.318 wide	●	XC-318-498	1 roll (cont.)	0.318 26 ft.	8.07 7.92 m	BK on WT
0.375" wide	●	XC-375-498	1 roll (cont.)	0.375 26 ft.	9.53 7.92 m	BK on WT

ELECTRICAL I.D.
Automation & Electrical Component Markers

Various sizes & label types for marking relays, solenoids, switches, drive motors or just about any component you have to label.

► **B-499 Nylon Cloth** material, permanent adhesive. Pliable for rough or smooth surfaces. Temp Range: -94°F to 194°F (-70°C to 90°C). UL recognized.

► **B-428 Metallized Polyester** material, permanent adhesive, silver finish. Temp Range: -40°F to 176°F (-40°C to 80°C). UL recognized.

► **B-422 Gloss Polyester** material, permanent adhesive. For smooth surfaces. Temp Range: -40°F to 212°F (-40°C to 100°C). UL recognized.

Material Notes	Diagram	Part Number	Labels per Cartridge	Dimensions – inches A B	Dimensions – mm A B	Color
General Purpose Nylon Cloth	▲	X-11-499	350	0.750 0.500	19.05 12.70	BK on WT
General Purpose Nylon Cloth	▲	X-84-499	350	0.900 0.500	22.86 12.70	BK on WT
Metallized Polyester	▲	X-17-428-SV-BK	500	1.000 0.500	25.40 12.70	BK on SV
Metallized Polyester (Black Border)	▲	X-24-428-SVBB-BK	500	1.130 0.500	28.70 12.70	BK on SV
Metallized Polyester	▲	X-29-428-SV-BK	500	1.500 0.500	38.10 12.70	BK on SV
Metallized Polyester	▲	X-20-428-SV-BK	100	2.000 1.000	50.80 25.40	BK on SV
Gloss Polyester	▲	X-19-422	250	1.000 1.000	25.40 25.40	BK on WT
Gloss Polyester	▲	X-30-422	250	1.500 0.750	38.10 19.05	BK on WT
Gloss Polyester	○	XC-1000-422	1 roll (cont.)	30 ft. 1.000	9.14 m 25.40	BK on WT



VOICE/DATA COMM I.D.
Patch Panel, Outlet & Faceplate Markers

Label patch panels with continuous supplies that set automatically to user-defined fixed spacing intervals. Die cut parts available for marking individual ports and wall faceplates.

► **B-422 Gloss Polyester** material, permanent adhesive. Temp Range: -40°F to 212°F (-40°C to 100°C). UL recognized.

Application	Diagram	Part Number	Labels per Cartridge	Dimensions – inches A B	Dimensions – mm A B	Color
Label Each Port	▲	X-7-422	350	0.500 0.500	12.70 12.70	BK on WT
Label Multiple Ports on Cont. Tape	○	XC-375-422	1 roll (cont.)	30 ft. 0.375	9.14 m 9.53	BK on WT
Label Multiple Ports on Cont. Tape	○	XC-500-422	1 roll (cont.)	30 ft. 0.500	9.14 m 12.70	BK on WT
Label Faceplate	▲	X-17-422	500	1.000 0.500	25.40 12.70	BK on WT
Label Faceplate	▲	X-29-422	500	1.500 0.500	38.10 12.70	BK on WT



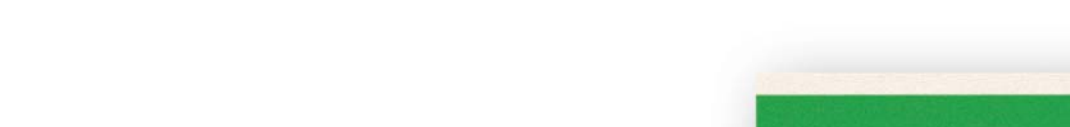
VOICE/DATA COMM I.D.
Cable Markers

Ideal for marking data cabling, this cable marker's protected printing offers superior abrasion resistance and resistance to dirt, oils, solvents and water.

Marker features a clear non-printed area which wraps around and overlaminates the printed text. Printer automatically "multiple repeats" your text in white print area.

► **B-427 Vinyl Self-Laminating** material, resistant to water, oil, solvents and abrasion. Temp range: -94°F to 158°F (-70°C to 70°C). UL recognized.

Sized to Fit	Diagram	Part Number	Labels per Cartridge	Dimensions – inches A B C	Dimensions – mm A B C	Color
2pair Fiber/Coaxial, Single/Multi-Mode	▲	XSL-19-427	250	1.000 1.000 0.375	25.40 25.40 9.53	BK on WT
CAT-5, 4pair UTP Copper	▲	XSL-102-427	250	0.500 1.250 0.375	12.70 31.75 9.53	BK on WT
CAT-5, 4pair UTP Copper, Fiber, Coaxial	▲	XSL-103-427	250	1.000 1.250 0.500	25.40 31.75 12.70	BK on WT
CAT-5, 4pair UTP Copper	▲	XSL-115-427	250	1.500 1.250 0.500	38.10 31.75 12.70	BK on WT
CAT-5, 4pair UTP Copper	▲	XSL-29-427	500	0.500 1.500 0.500	12.70 38.10 12.70	BK on WT
CAT-5, 4pair UTP Copper	▲	XSL-30-427	250	0.750 1.500 0.500	19.05 38.10 12.70	BK on WT
CAT-5, 4pair UTP Copper, Fiber, Coaxial	▲	XSL-31-427	250	1.000 1.500 0.500	25.40 38.10 12.70	BK on WT
CAT-5, 4pair UTP Copper, Fiber, Coaxial	▲	XSL-31-427-YL-BK	250	1.000 1.500 0.500	25.40 38.10 12.70	BK on YL
CAT-5, 4pair UTP Copper, Fiber, Coaxial	▲	XSL-32-427	250	1.500 1.500 0.500	38.10 38.10 12.70	BK on WT
25pair Copper, 4-12pair Fiber, Coaxial	▲	XSL-21-427	100	1.000 2.500 0.750	25.40 63.50 19.05	BK on WT
25pair Copper, 4-12pair Fiber, Coaxial	▲	XSL-21-427-YL-BK	100	1.000 2.500 0.750	25.40 63.50 19.05	BK on YL
25pair Copper, 4-12pair Fiber, Coaxial	▲	XSL-116-427	100	1.500 2.500 0.750	38.10 63.50 19.05	BK on WT
50pair Copper, 24pair Fiber, Backbone	▲	XSL-23-427	100	1.000 4.000 1.000	25.40 101.60 25.40	BK on WT
50pair Copper, 24pair Fiber, Backbone	▲	XSL-23-427-YL-BK	100	1.000 4.000 1.000	25.40 101.60 25.40	BK on YL
50pair Copper, 24pair Fiber, Backbone	▲	XSL-33-427	100	1.500 4.000 1.000	38.10 101.60 25.40	BK on WT
100pair Copper, 36pair Fiber, Backbone	▲	XSL-34-427	50	1.500 6.000 1.500	38.10 152.40 38.10	BK on WT



VOICE/DATA COMM I.D.
ID for Racks, Bays, Frames, Public Network & Data Centers

Variety of sizes and permanent materials for marking Racks, Bays, Frames, Slots and other voice/data equipment.

► **B-422 Gloss Polyester** material, permanent adhesive. Temp Range: -40°F to 212°F (-40°C to 100°C). UL recognized.

► **B-483 Ultra Aggressive Polyester**, permanent adhesive for powder-coated/textured surfaces. Temp Range: -40°F to 248°F (-40°C to 120°C). UL recognized.

► **B-580 Indoor/Outdoor Vinyl** material, permanent adhesive, good for rough surfaces, wide range of colors. Temp Range: -40°F to 248°F (-40°C to 120°C).

Material Notes	Diagram	Part Number	Labels per Cartridge	Dimensions – inches A B	Dimensions – mm A B	Color
Ultra Polyester for powder-coated/textured surfaces	▲	X-17-483	500	1.000 0.500	25.40 12.70	BK on WT
Ultra Polyester for powder-coated/textured surfaces	▲	X-20-483	100	2.000 1.000	50.80 25.40	BK on WT
Ultra Polyester for powder-coated/textured surfaces	▲	X-61-483	100	2.000 0.500	50.80 12.70	BK on WT
Ultra Polyester for powder-coated/textured surfaces	○	XC-1000-483	1 roll (cont.)	30 ft. 1.000	9.14 m 25.40	BK on WT
Gloss Polyester for smooth/lightly textured surfaces	▲	X-17-422	500	1.000 0.500	25.40 12.70	BK on WT
Gloss Polyester for smooth/lightly textured surfaces	▲	X-19-422	250	1.000 1.000	25.40 25.40	BK on WT